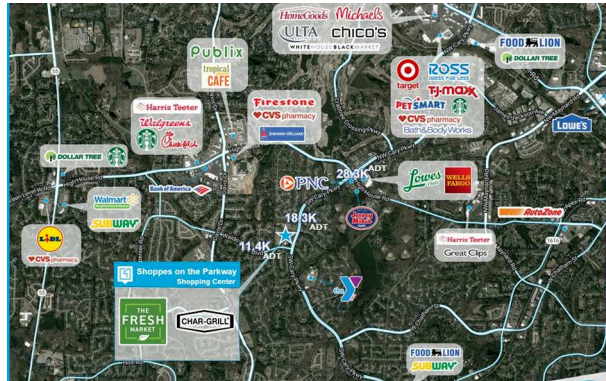


## SHOPPES ON THE PARKWAY

3655 SW Cary Parkway, Cary, NC 27513  
TOTAL GLA: 40,007

## BRIEF DESCRIPTION

Located approximately 6 miles south of the Research Triangle Park and 10 miles west of downtown Raleigh, Shoppes on the Parkway is a 40,007 SF neighborhood shopping center anchored by a high-performing Fresh Market. Positioned in the heart of the affluent and densely populated neighborhoods of Cary, NC, the property contains a diverse roster of local and regional tenants that provide necessity-goods and services that cater to the local residential population.



## DEMOGRAPHICS

### 2024 ESTIMATES

	POPULATION	HOUSEHOLDS	HH INCOME
1-Mile	12,247	4,469	\$213,030
3-Mile	90,125	35,917	\$184,236
5-Mile	216,714	84,633	\$175,358

### TRAFFIC COUNTS

Total	29,700
SW Cary Pkwy	18,300
Waldo Road Blvd	11,400

## PROPERTY HIGHLIGHTS

### BULLET POINTS

- County: Wake
- Type: Retail
- Year Built: 2006
- Metro Area: Raleigh MSA

## CONTACTS

### LEASING

Jennifer MacKay  
jennifer.mackay@ShopOne.com  
248.590.0059

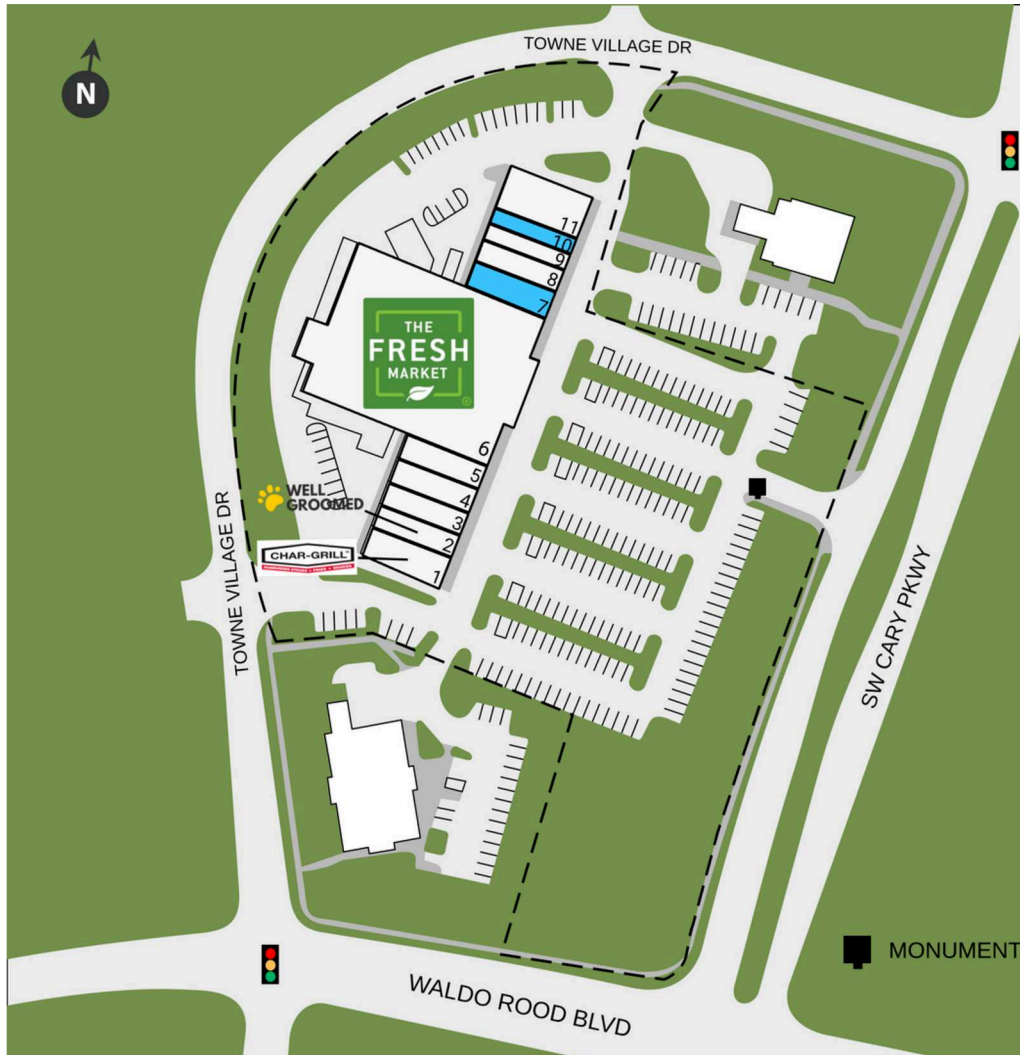
### LEASING TEAM

leasing@ShopOne.com  
567.361.1111

## SHOPPES ON THE PARKWAY

3655 SW Cary Parkway, Cary, NC 27513

TOTAL GLA: 40,007



SUITE	GLA	TENANT
1	1,925	Char Grill
2	1,325	Well Groomed Pets
3	1,625	Yo2 Nail Bar
4	1,625	Refresh Spa
5	1,625	Sweetea
6	23,714	The Fresh Market
7	1,625	Available
8	1,625	European Cleaners
9	1,300	Hibachi 88
10	1,350	Intentions Salon
11	2,268	Wellness Pharmacy of Cary